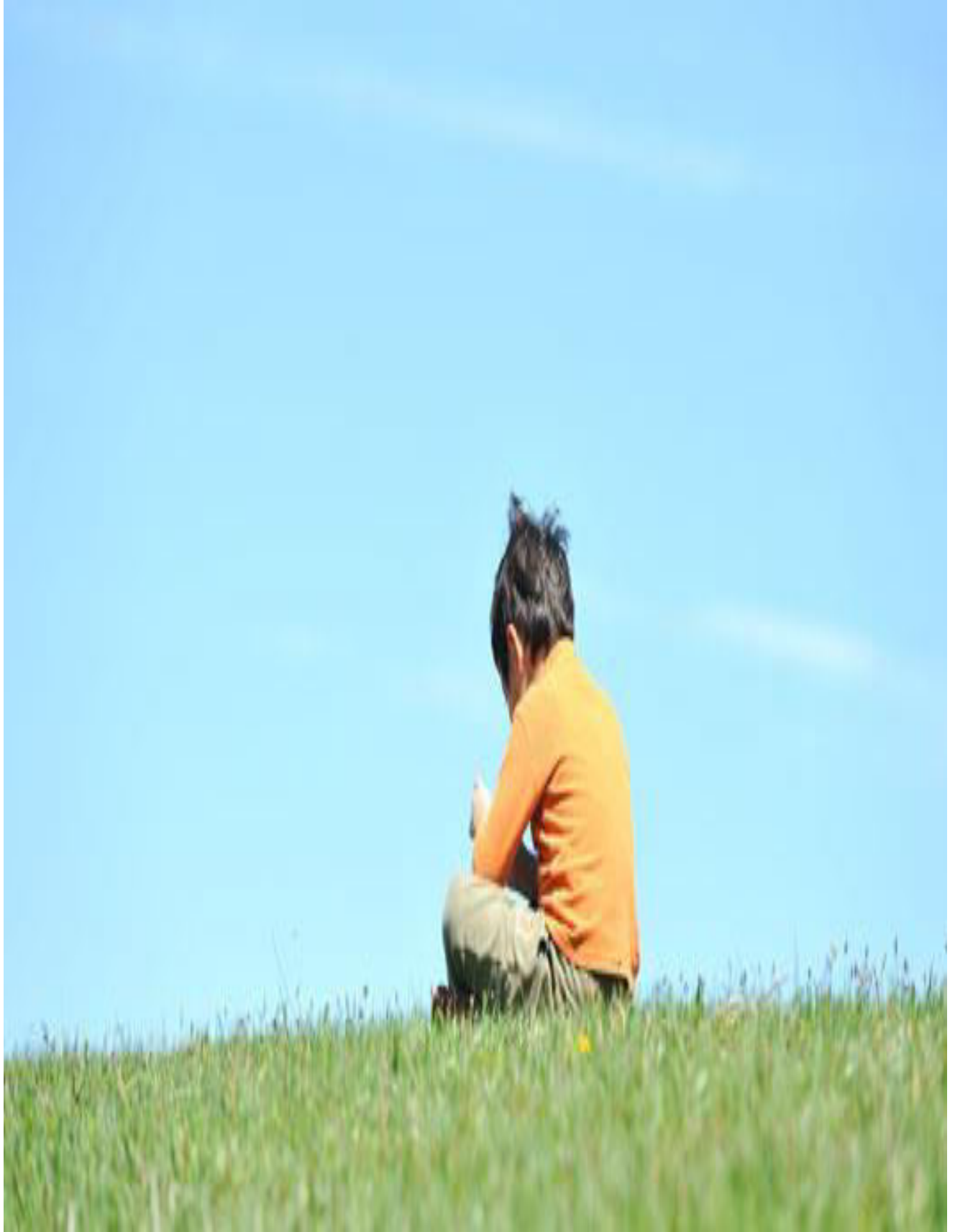


Use R.C.C. Door Frame

An Initiative by SAPNA CEMENT INDUSTRIES

*Save the Planet*







who we are

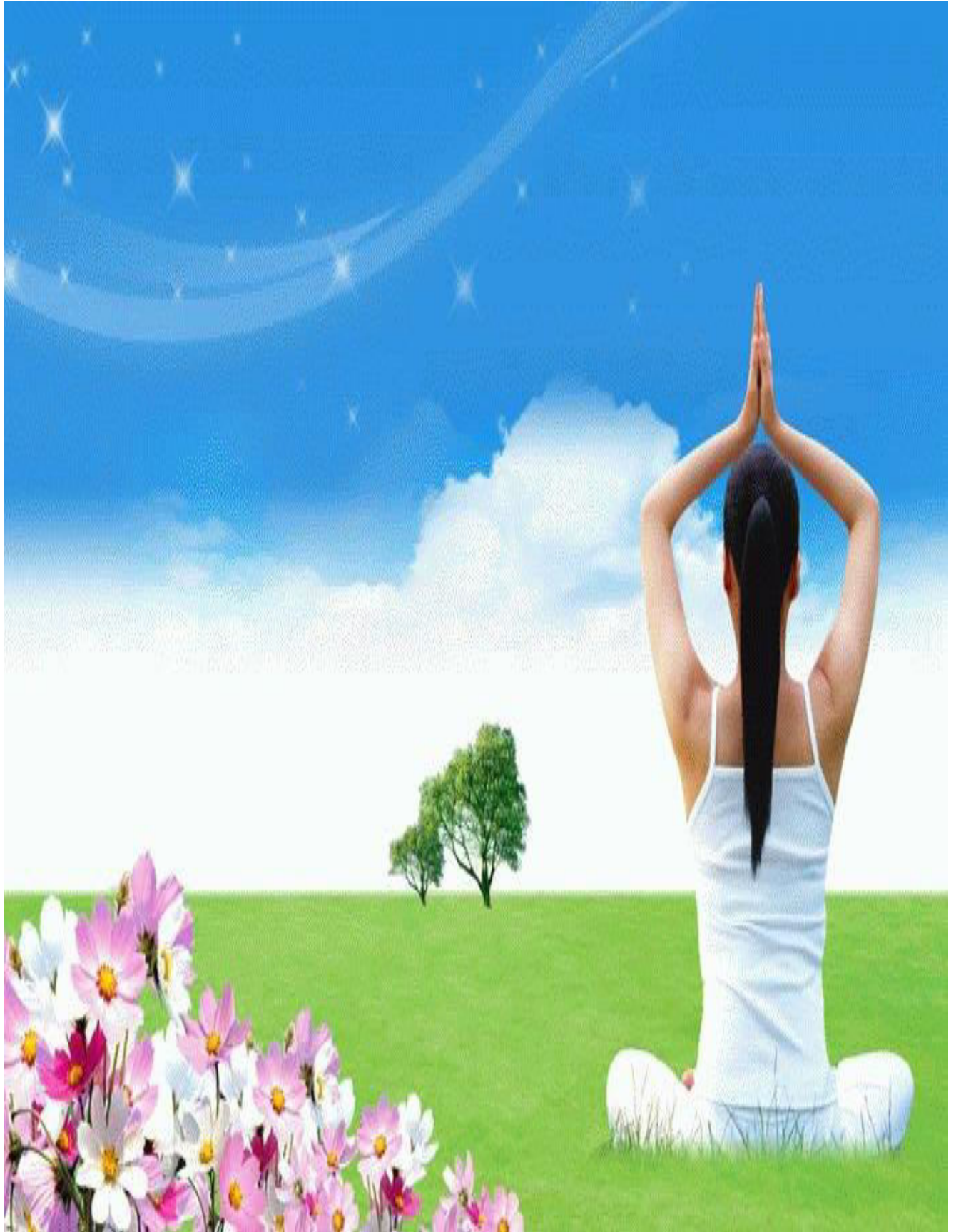
## Our Vision

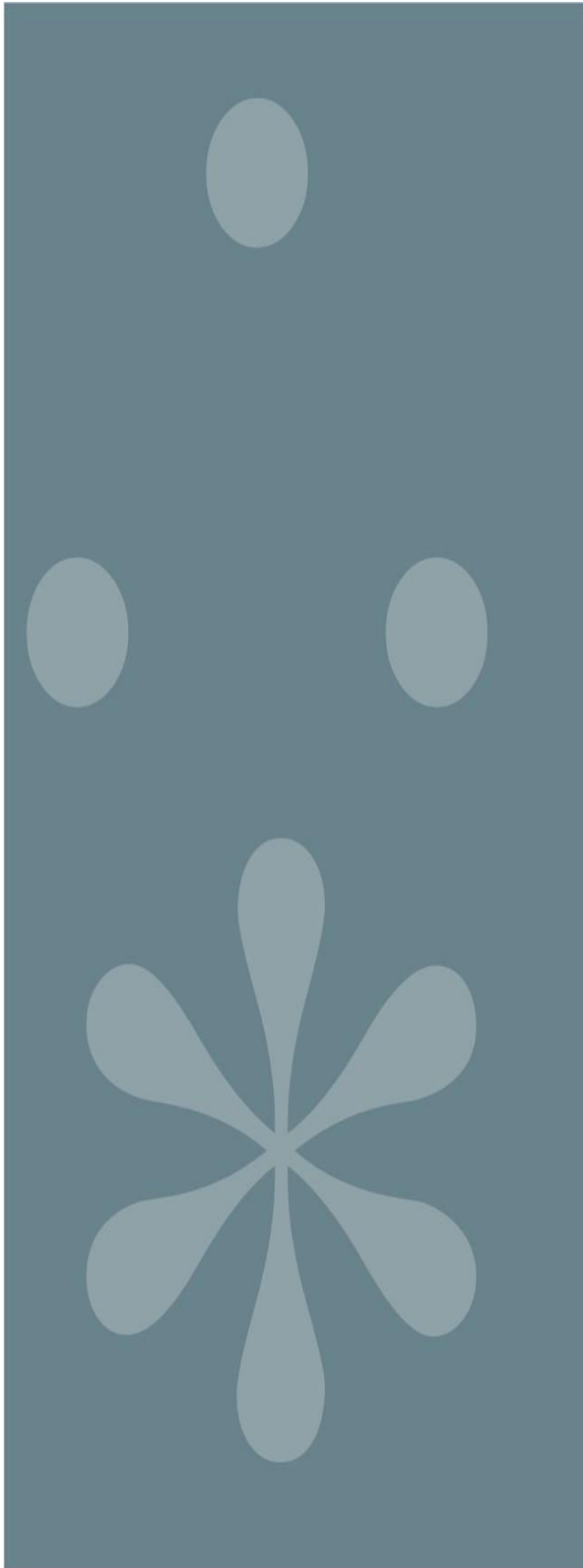
To establish "green revolution" on earth and to carry brighter future to the planet.

## Sapna cement ind.

We are a leading Manufacturer and Supplier of a comprehensive range of RCC Door Frames. The RCC Door Frames offered by us is wooden type and marbal finish and gray type. All the raw materials used in the manufacturing of RCC Door Frames such as sand, cement, grit, iron and other quality improving materials are of superior quality. RCC Door Frames are generally used in external or internal door and window of any building.

Our RCC Door Frames are highly demanded and are appreciated in various industries. RCC Door Frames offered by us are available at in different types at competitive market prices





## Application Area

We are one of the most trusted manufacturers, suppliers and exporters of a wide range of r.c.c doorframe products. These products are used for high-rise building, bungalow, flat, row house tanament. These r.c.c door frame products find application in construction in whole world.

- High rise buliding
- Bungalow
- Flat
- Row house
- Tanamen

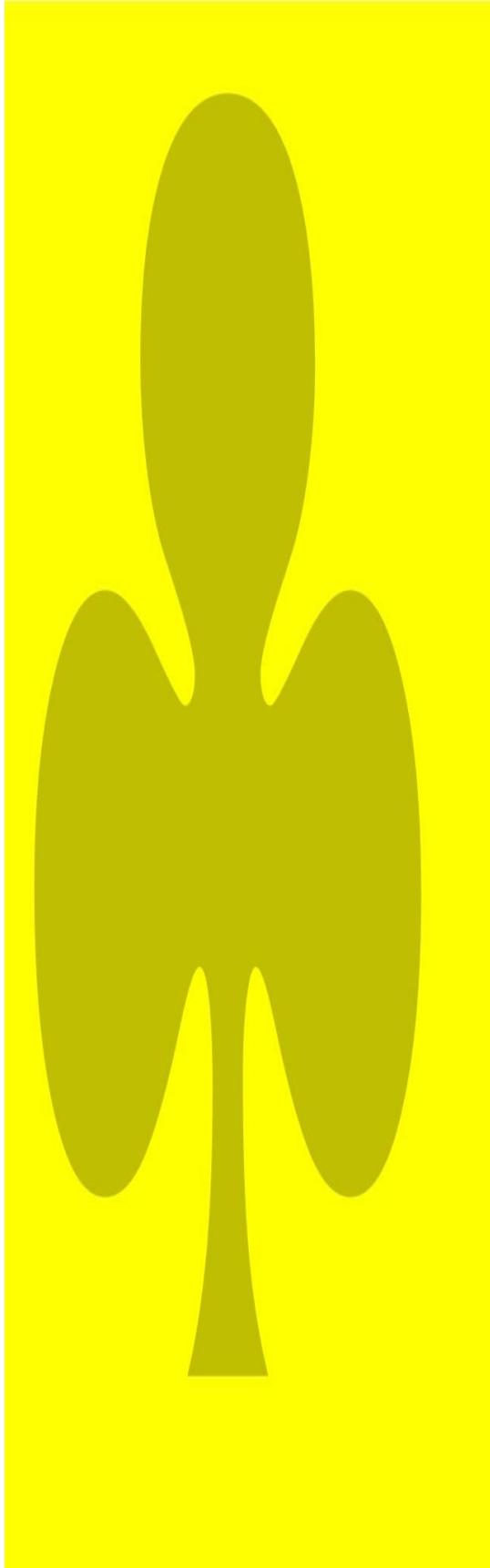
## Our Team

We are backed by some of the most brilliant professionals, who help us in undertaking different activities of the organization. Our team members are selected after complete evaluation of their skills and domain expertise. We also train our professionals to enhance their skills and make them familiar with organizations business.

Our team comprises the following professionals:

- Engineers
- Quality controllers
- Warehouse supervisors
- Skilled workers
- Sales & marketing professional

Moreover, we also maintain cordial environment to boost up the morale of our employees.



### **Warehouse & Packaging**

Our organization has large warehouses, which helps us in storing the raw material and finished products in bulk quantity. We have segregated our warehouse in variety of sections for arranging the products categorically. This helps us in convenient storage and easy retrieval of products during transit. We have different types of racks and material handling equipment inside our warehouse for loading the consignments. Being alarmed about the safety of products, we pack these using superior quality packaging material. Proper packaging ensures maximum safety of the R.C.C DOOR FRAME products during transit.

### **Client Satisfaction**

Being a client centric organization our only motive is to meet the expectation of the customers. Our range of R.C.C DOOR FRAME Products is offered to the clients at cost effective rates and they get best value for their money. We also ensure that these R.C.C DOOR FRAME products are delivered to the clients within the stipulated period of time. Moreover, we take frequent feedback from the clients about the quality of our products. Within a short phase of time, we have gained a prominent place in this industry. We undertake ethical business practice and maintain transparency in our dealings. Presently, we are associated with many reputed clients across the India.



### **Why Us?**

**We have gained a respectable place in our domain owing to our R.C.C DOOR FRAME Products with our experienced professionals and technocrats. With the support of our professionals we are able to satisfy the customers and generate profit for the organization. Some of our qualities which distinct us from other manufacturers are listed below:**

- **Highly competent and experienced professionals**
- **Timely deliveries at competitive prices**
- **Clarity and consistency in terms and prices**
- **Transparency in communication**
- **World class quality standards**
- **Employment of advanced technology**
- **Customized facilities**
- **Spacious and automated warehouse**



### History of R.C.C Door Frame

It was some 30 years back Central Building Research Institute, Roorkee and National Building Organization, New Delhi (both Govt. Of India research organizations) were engaged in developing door & window frames of a versatile building material other than wood. Govt. Of India has always encouraged use of substitute building material for wood in order to save forest wealth & environment. For windows rolled steel sections, pressed steel sheet sections, aluminum sections & lastly fiber glass material were found to be the best alternatives. However for doors, RCC Door Frames were found to be the best & last option. The ease of casting in three pieces, usage of quality moulds to obtain precise dimensional accuracy & super smooth surface revealed that conventional wooden door frames can be conveniently replaced by precast RCC Door Frames.

Studies & researches finally recognized the suitability of RCC Door Frames which compelled Bureau of Indian standard to formulate standard specification of RCC Door & Window Frames (IS: 6523 of 1983). Most of the manufacturers of precast RCC Door Frames belong to Vidarbha region. Reason being the sand required for RCC door frames has to be super fine & silt less. It is Kanhan, Pench, Vainganga rivers in Nagpur district where the required quality sand is available. Attempts from other regions for manufacturing the RCC door frames with available sand from nearby rivers were failed as the product did not meet expectations.

The item of RCC Door Frames have been included since long in the Schedule of Rates and Specification of CPWD, PWD (Maharashtra), other State PWD, MES, HUDCO, CIDCO, Indian Railways, MHADA, Housing Boards of Maharashtra & other States, PSU & other Semi Govt. Departments etc.





## Features

1. Termite proof
2. Weather resistant
3. Pests & Other Micro Organism Resistant
4. Fire resistant
5. Elegant Designs
6. Durable
7. Excellent Surface finishing with Rock strength
8. Dimensionally accurate, Easy to assemble
9. Robust Construction
10. Superior in Quality
11. Corrosion Resistant
12. **Economical : Compared to wooden frames and iron frames**
13. Eco-friendly building material.
14. Packed in corrugated boxes for safe transport and storage
15. Delivered in 3 pieces for easy assembly at site

In costal region, steel frames are ruled out due to highly corrosive condition. Wooden frames are prohibitively expensive. SAPNA CEMENT IND. RCC door frames turn out to be the best alternative in such conditions.

## **The Wonders of Virgin Block**

- Each Sapna cement ind. RCC Door Frame is provide with a perfixed virgin block made of high quality dense plastic. Virign block are provided at specific places in all the 3 piecies to facilitate easy and fast fixing of hinges and other fixtures.
- The virgin block is prefixed with the reinforcement bar.
- Virgin block are provided on both the sections for fixing hinges and other fixture.
- It has a holding capacity of 150 Kg.\*
- Provided for fixing a tower bolt too.

## **MOUNTING OF HINGES**

- Avoid use of hammers for fixing hinges.
- Make holes on the wonder block using an undersize drill bit.
- Drive in the screw using a screw driver.
- The wonder block has self threading capacity.

The section of the frame members and overall sizes mentioned above are most commonly specified and used everywhere. These are readily available. However we can also supply special section and sizes of door frames for bulk orders.

The first and foremost characteristic of RCC Door Frames is that they are strong & durable. Unlike wooden & steel frames, RCC Door Frames remain unaffected by termite, rusting, decaying & deteriorations even when it comes in constant contact with water. RCC Door Frames are found to be the most suitable frames for all weather conditions. RCC door frames excellent and suitable for luxurious apartment, villas and the low budget homes as well. RCC Door Frames are eco friendly, durable and long lasting that also maintains the traditional elegant and attractive appearance intact



### **Significance of sapna cement ind RCC Door Frames**

#### **RCC Door Frames - The Concrete option for Today and Tomorrow - Ensures strength, quality and environmental factors**

We could talk about the excellent finish but....

The need of the day is to have building products that accelerate the speed of the construction without compromising on strength, quality and environmental factors.

SAPNA CEMENT IND. Frames are elegant, smooth, easy to assemble, easy to paint and offer simple yet reliable arrangement for mounting hinges, fixtures and shutters.

In fact, SAPNA CEMENT IND. Frames have provided a durable economical and eco-friendly alternative for the building industries.

SAPNA CEMENT IND. Is a name associated with RCC Door Frames required by the building industry. Frames are well researched and designed to provide maximum value for your money. A careful thought has gone into making it the best option available, by all means.



### SELECTING THE RIGHT DOOR FRAME

Sr.	description	Wooden Frame	Iron frame	R.C.C door frame	Benefits
1	Cost	Expensive	Expensive	Economical	30-40% Saving
2	Material	Wood	iron	R.C.C.	More Stronger
3	Termite/ corrosive	Not Resistant	Not Resistant	Resistant	More Durable
4	Fire	Not Resistant	Resistant	Resistant	Safety Benefits
5	Water	Shape changes due to expansion	Corrosive of frame	No Effect	Restores Beauty
6	Handling	Not Easy	Not easy	Easy	Speed up the work

## Our Quality Policy

- Continuously strive to improve the effectiveness of our quality system
- Adopting every processing & testing stage to keep up to date quality
- Adhering to human resource management for the quality assurance program

We are a quality conscious organization and take maximum care to maintain the required standard in our products and services. Our range of range of R.C.C DOOR FRAME Products is manufactured using of as sand, cement, grit, iron and other quality improving materials are of superior quality, which are procured from reputed vendors. At every stage of manufacturing, our R.C.C DOOR FRAME products undergo stringent quality checks. The R.C.C DOOR FRAME products are tested by the quality controllers on the basis of durability.

---

## Technically detail

- Following are the technical specifications of various product:

sr	Description	Size and technical specification
1	Cross section of members of door frames (for normally used single rebet frames)	Both in chamfered & molded patterns at exposed corners.
2	Overall height of door frames in ft.	<b>2x6.5 2.5x6.5 3x6.5</b>
3	Overall width of door frame in inch	5x2.5 4x2.5 10x2.5
4	Minimum grade of concrete as per IS Code 6523	M-40
5	Longitudinal bars	5 mm dia 3 Nos. M. S. bars.
6	Other bars	5 mm dia 3 nos. M. S. bars.
7	Quality of M. S. bars. used	Most superior quality
8	Provision of Hinge Blocks	3 Nos. White Polyacrylic blocks for each vertical member.
9	Provision for tower bolt fixing	2 Nos. White Polyacrylic blocks for each horizontal member.
10	Provision of holes for aldrops	2 Holes on each vertical members of 16 mm dia.
11	Provision for Holdfast	2 Nuts embedded on back side of each vertical member.
12	Type of casting and curing	Factory made product. Casting done on table vibrator and curing in tank/pond in factory.
13	Packing style of finished product	Each vertical and horizontal member supplied in 2 ply corrugated box.
14	Joint in Masonry	By cement mortar during erection of masonry without the possibility of joint cracks (Homogenous Joints)
15	Type of painting	No need of painting

We are one of the most trusted manufacturers, suppliers and exporters of a wide range of R.C.C doorframe Products. These products are used for high-rise building, bungalow, flat, row house tenatament. These R.C.C door frame products find application in construction in whole world.

- Our wide range of R.C.C DOOR FRAME product list is below.

Sr	Wooden base	Marbel base	Gray base
1	R.C.C DOOR FRAME COLOR -6.5 X 2.0(4X2.5)	R.C.C DOOR FRAME white- 6.5 X 2.0(4X2.5)	R.C.C DOOR FRAME gray-6.5 X 2.0(4X2.5)
2	R.C.C DOOR FRAME COLOR -6.5 X 2.0(5X2.5)	R.C.C DOOR FRAME white - 6.5 X 2.0(5X2.5)	R.C.C DOOR FRAME gray -6.5 X 2.0(5X2.5)
3	R.C.C DOOR FRAME COLOR -6.5 X 2.5(4X2.5)	R.C.C DOOR FRAME white - 6.5 X 2.5(4X2.5)	R.C.C DOOR FRAME gray -6.5 X 2.5(4X2.5)
3	R.C.C DOOR FRAME COLOR -6.5 X 2.5(4X2.5)	R.C.C DOOR FRAME white - 6.5 X 2.5(4X2.5)	R.C.C DOOR FRAME gray-6.5 X 2.5(4X2.5)
4	R.C.C DOOR FRAME COLOR -6.5 X 2.5(5X2.5)	R.C.C DOOR FRAME white - 6.5 X 2.5(5X2.5)	R.C.C DOOR FRAME - gray 6.5 X 2.5(5X2.5)
5	R.C.C DOOR FRAME COLOR -6.5 X 2.5(6X2.5)	R.C.C DOOR FRAME white - 6.5 X 2.5(6X2.5)	R.C.C DOOR FRAME gray -6.5 X 2.5(6X2.5)
6	R.C.C DOOR FRAME COLOR-6.5X 3.0(10X2.5)	R.C.C DOOR FRAME white - 6.5X 3.0(10X2.5)	R.C.C DOOR FRAME gray-6.5X 3.0(10X2.5)
7	R.C.C DOOR FRAME COLOR -6.5 X 3.0(4X2.5)	R.C.C DOOR FRAME white - 6.5 X 3.0(4X2.5)	R.C.C DOOR FRAME gray-6.5 X 3.0(4X2.5)
8	R.C.C DOOR FRAME COLOR -6.5 X 3.0(5X2.5)	R.C.C DOOR FRAME white - 6.5 X 3.0(5X2.5)	R.C.C DOOR FRAME gray -6.5 X 3.0(5X2.5)
9	R.C.C DOOR FRAME COLOR -6.5 X 3.0(6X2.5)	R.C.C DOOR FRAME white - 6.5 X 3.0(6X2.5)	R.C.C DOOR FRAME gray-6.5 X 3.0(6X2.5)
10	R.C.C DOOR FRAME COLOR -6.5 X 3.5(5X2.5)	R.C.C DOOR FRAME white - 6.5 X 3.5(5X2.5)	R.C.C DOOR FRAME gray-6.5 X 3.5(5X2.5)
11	R.C.C DOOR FRAME COLOR -6.5 X 3.5(6X2.5)	R.C.C DOOR FRAME white - 6.5 X 3.5(6X2.5)	R.C.C DOOR FRAME gray-6.5 X 3.5(6X2.5)

## RCC DOOR FRAME PRODUCT GALLERY





A division of sapna corporation

**Factory address:**

# **Sapna cement industries**

Near h.p petrol pump

Rajkot –bhavnager highway

Sardhar-360 025

Dist:-rajkot Gujrat,india

W:-[www.sapnacorporation.com](http://www.sapnacorporation.com), E :- [rahul@sapnacorporation.com](mailto:rahul@sapnacorporation.com)

Ph: +91-281-2781327, +91 -94288 91937 , +91 -94085 00007